

# Pumpkin Herbicide Trials, 2011

R. Allen Straw

Area Specialist

Virginia Cooperative Extension

# Locations in 2011

- Montgomery County
  - NT
  - Drip Irrigation
  - Variety
    - ‘Magic Wand’
- Allegheny County, NC
  - NT
  - No Irrigation
  - Variety
    - ‘Aladdin’
- Chowan County, NC
  - NT
  - Center Pivot Irrigation
  - Variety
    - ‘Hijinks’
- Washington County
  - CT
  - No Irrigation
  - Variety
    - ‘Spartan’

Lost to Frost

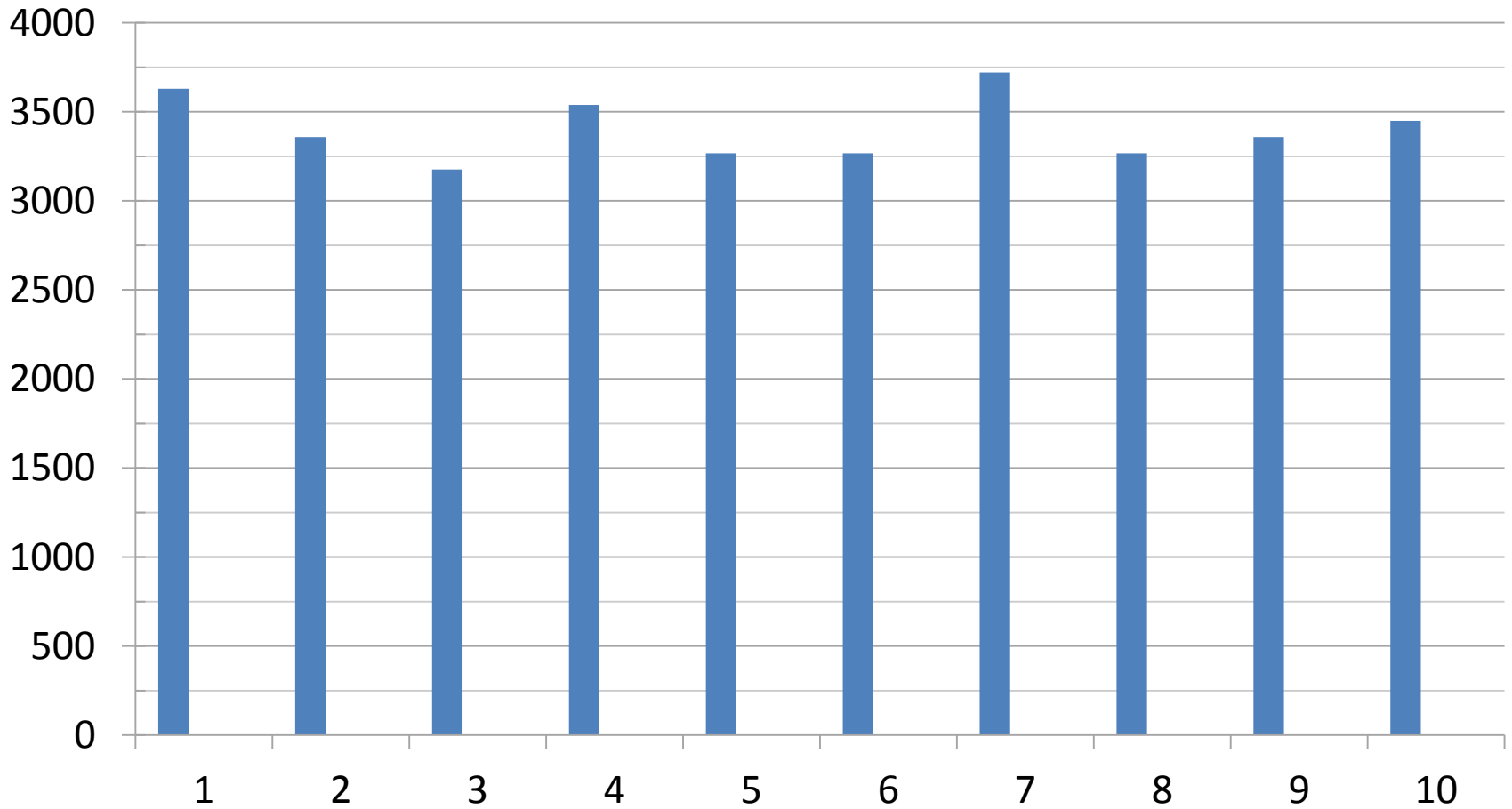
# Herbicide Treatments, 2011

1. UTC
2. Dual Magnum @ 1.5 pints/A
3. Dual Magnum @ 1.5 pints/A plus Reflex @ 1.5 pints/A
4. Dual Magnum @ 1.5 pints/A plus Reflex @ 2 pints/A
5. Dual Magnum @ 1.5 pints/A plus Reflex @ 3 pints/A

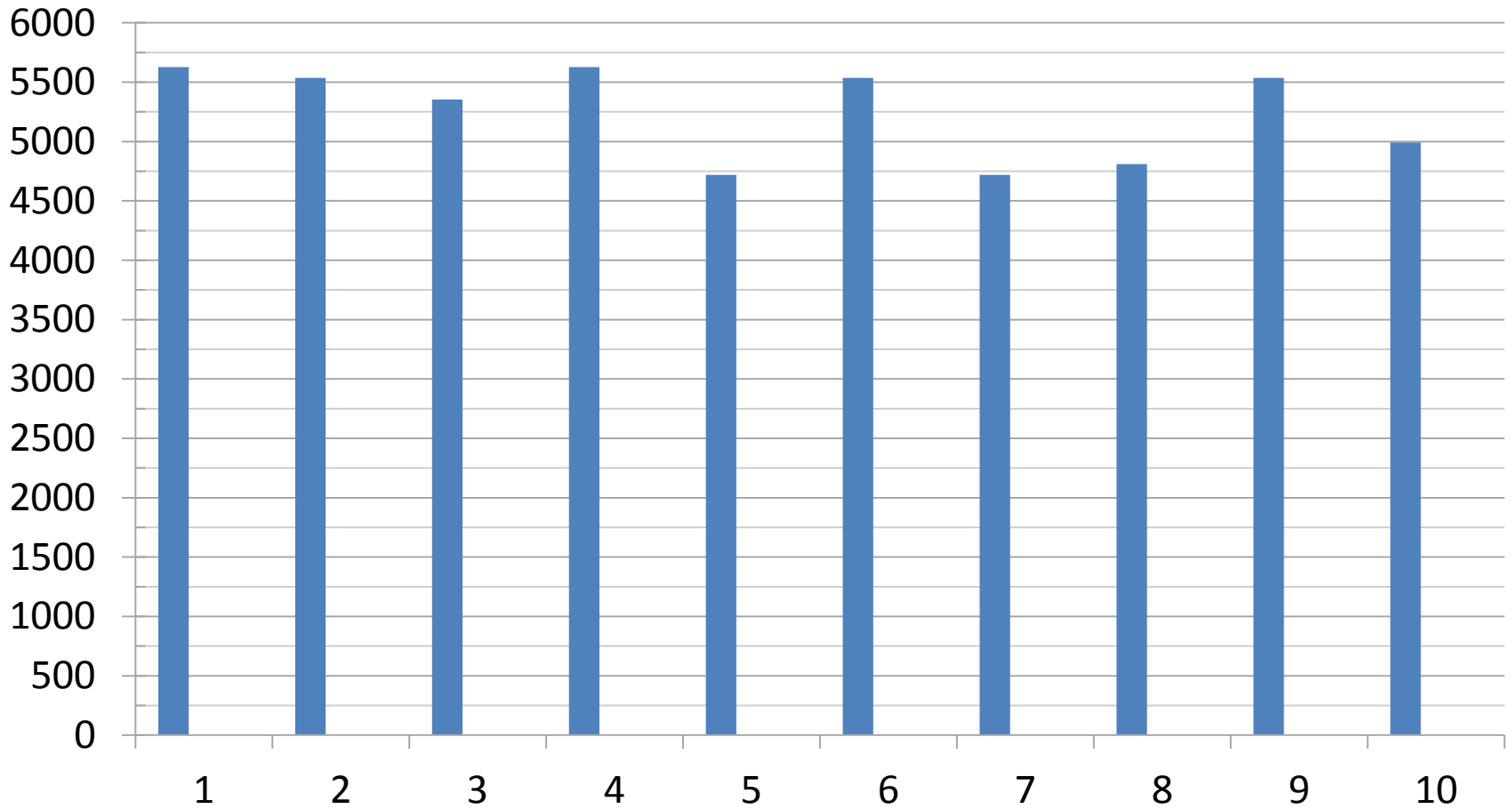
# Herbicide Treatments, 2011

6. Dual Magnum @ 1 pints/A plus Command 3ME @ 1 pint/A plus Reflex @ 1.5 pints/A
7. Dual Magnum @ 1 pints/A plus Command 3ME @ 1 pint/A plus Reflex @ 2 pints/A
8. Dual Magnum @ 1 pints/A plus Command 3ME @ 1 pint/A plus Sandea @ 2/3 oz/A
9. Command 3ME @ 1 pint/A plus Curbit @ 3 pints/A
10. Command 3ME @ 21 fl oz/A plus Curbit @ 4 pints/A

# Plant Stand – no./A Montgomery County

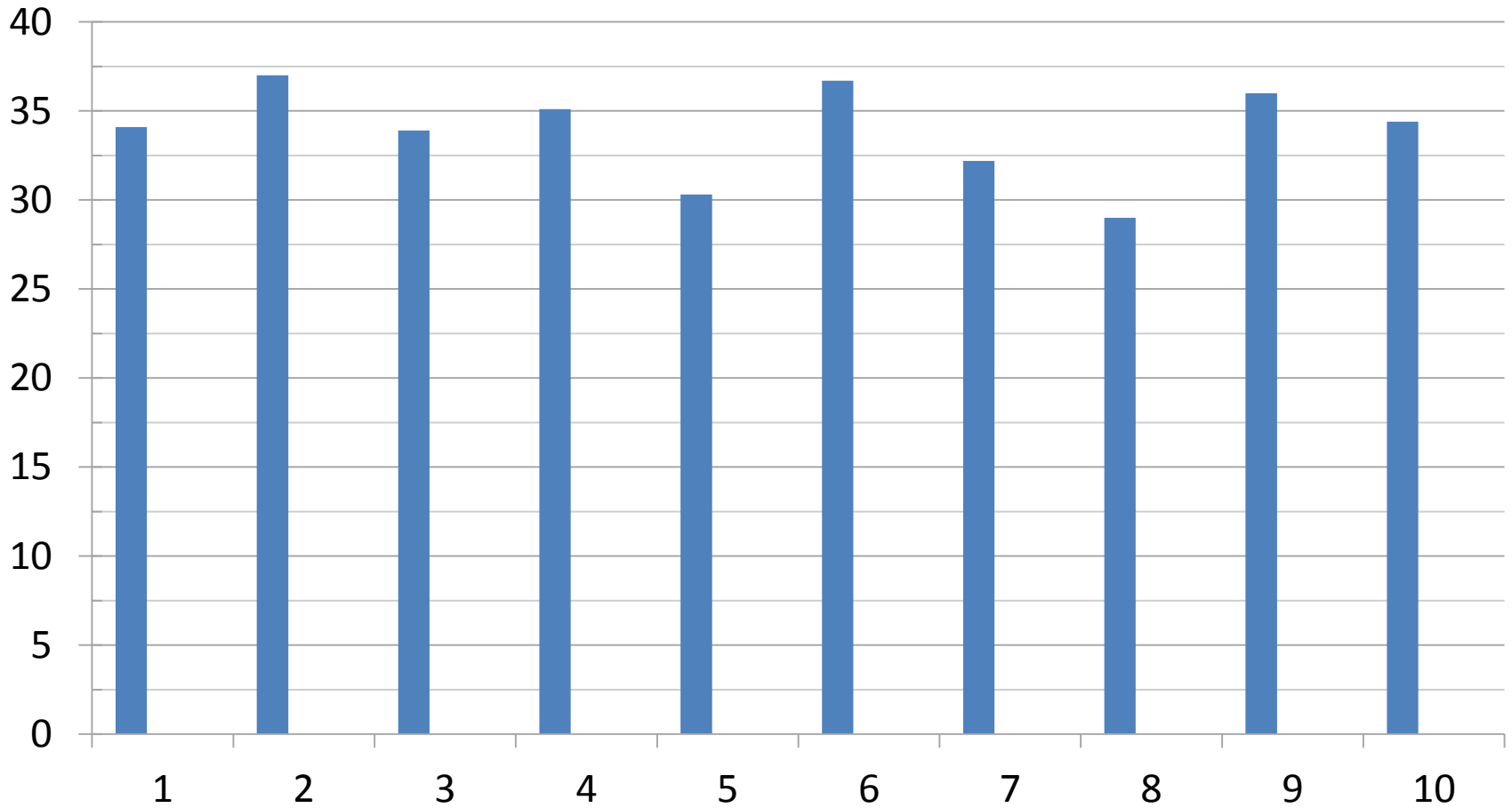


# Yield – no./A Montgomery County



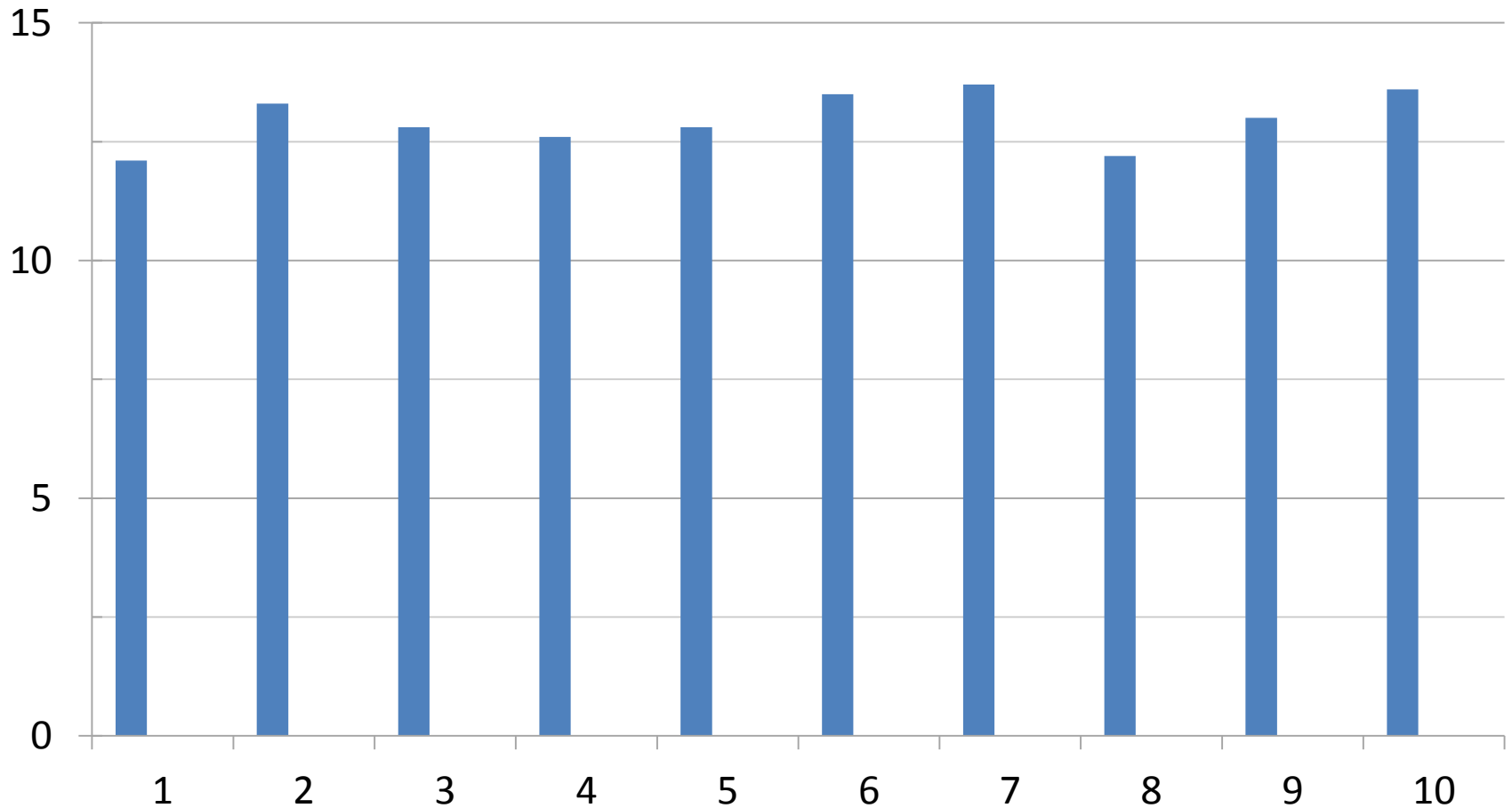
# Yield – tons/A

## Montgomery County



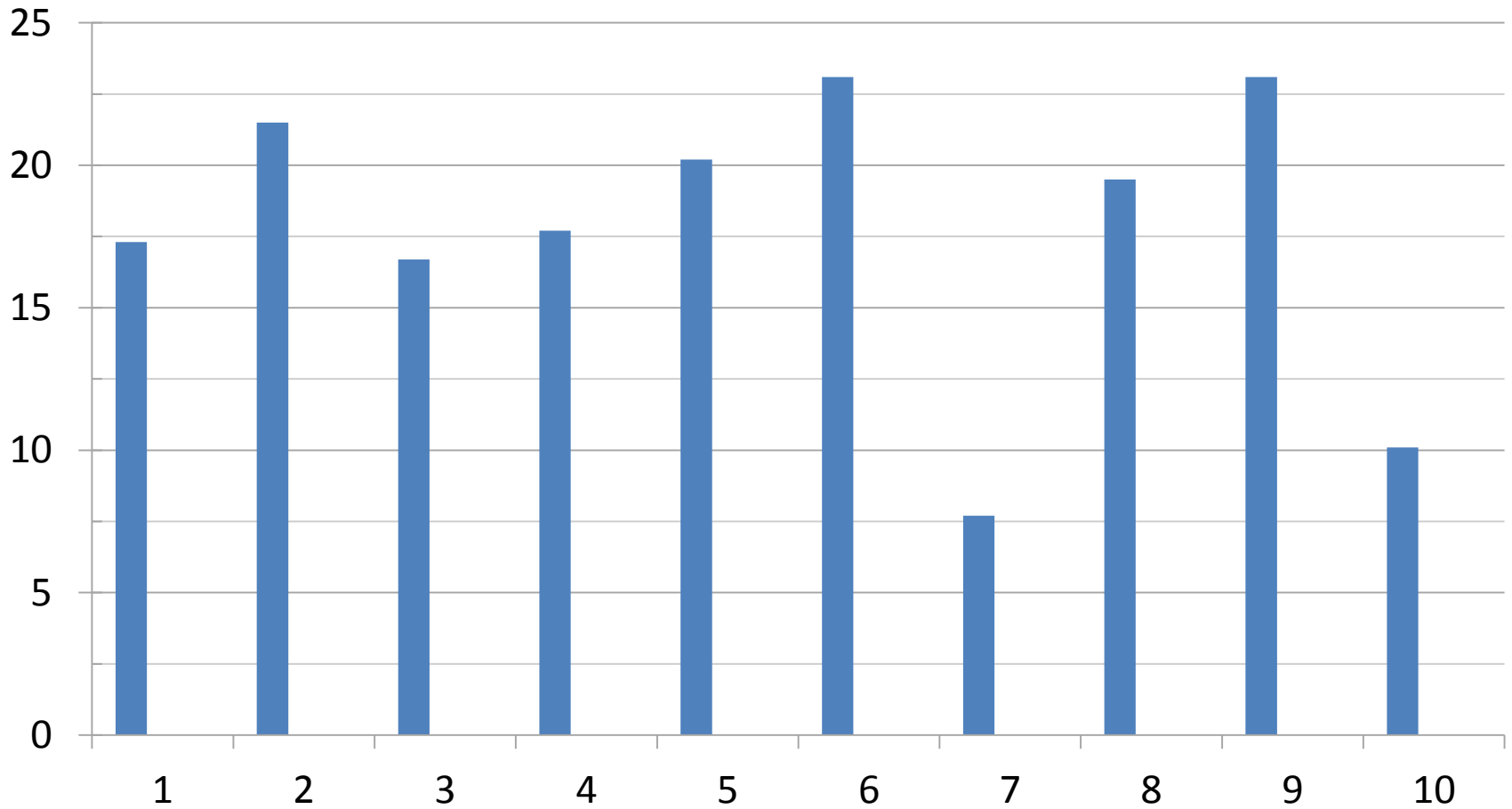
# Average Fruit Weight – lb/fruit

## Montgomery County



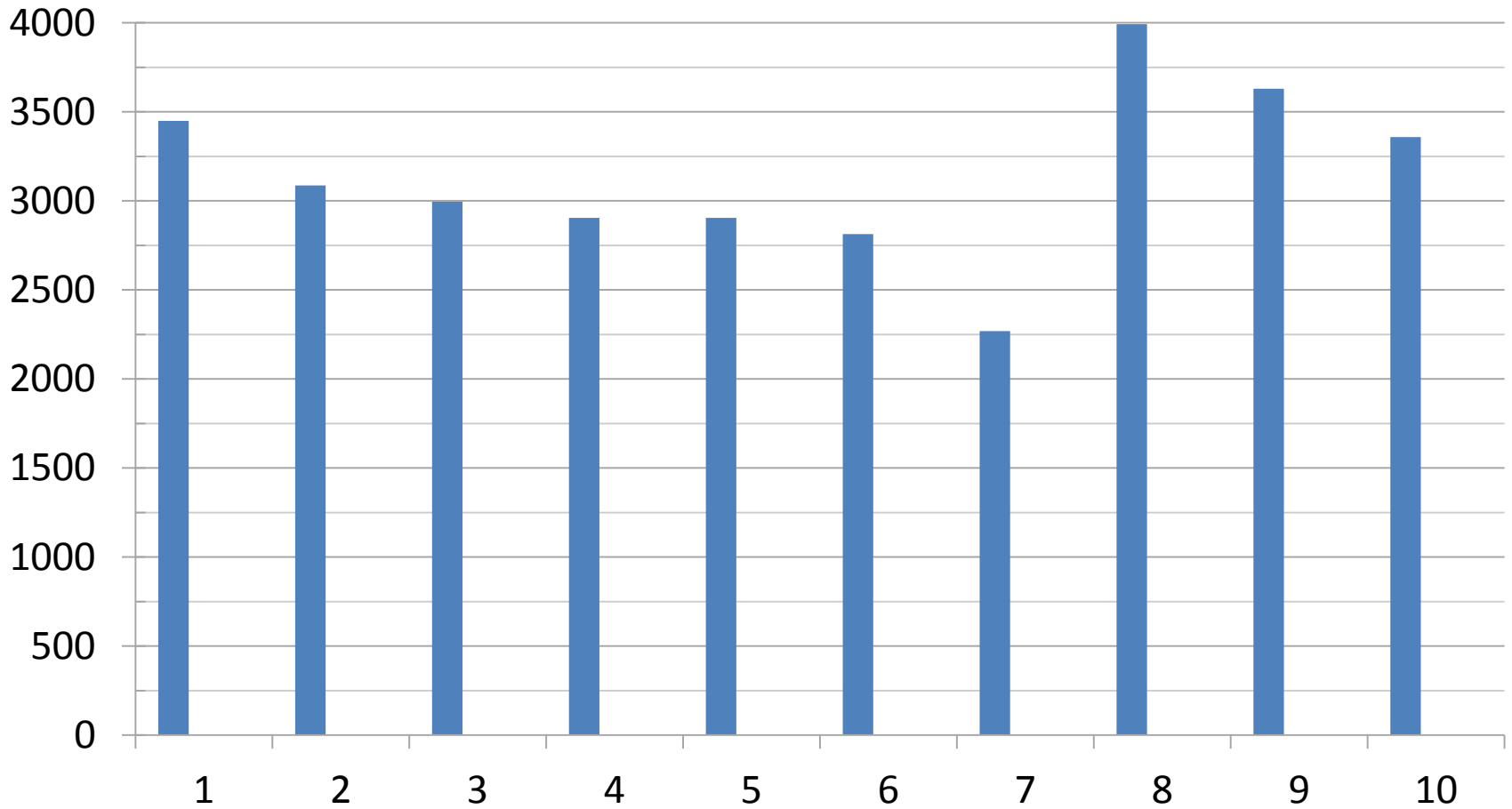


# Immature Fruit – % Montgomery County



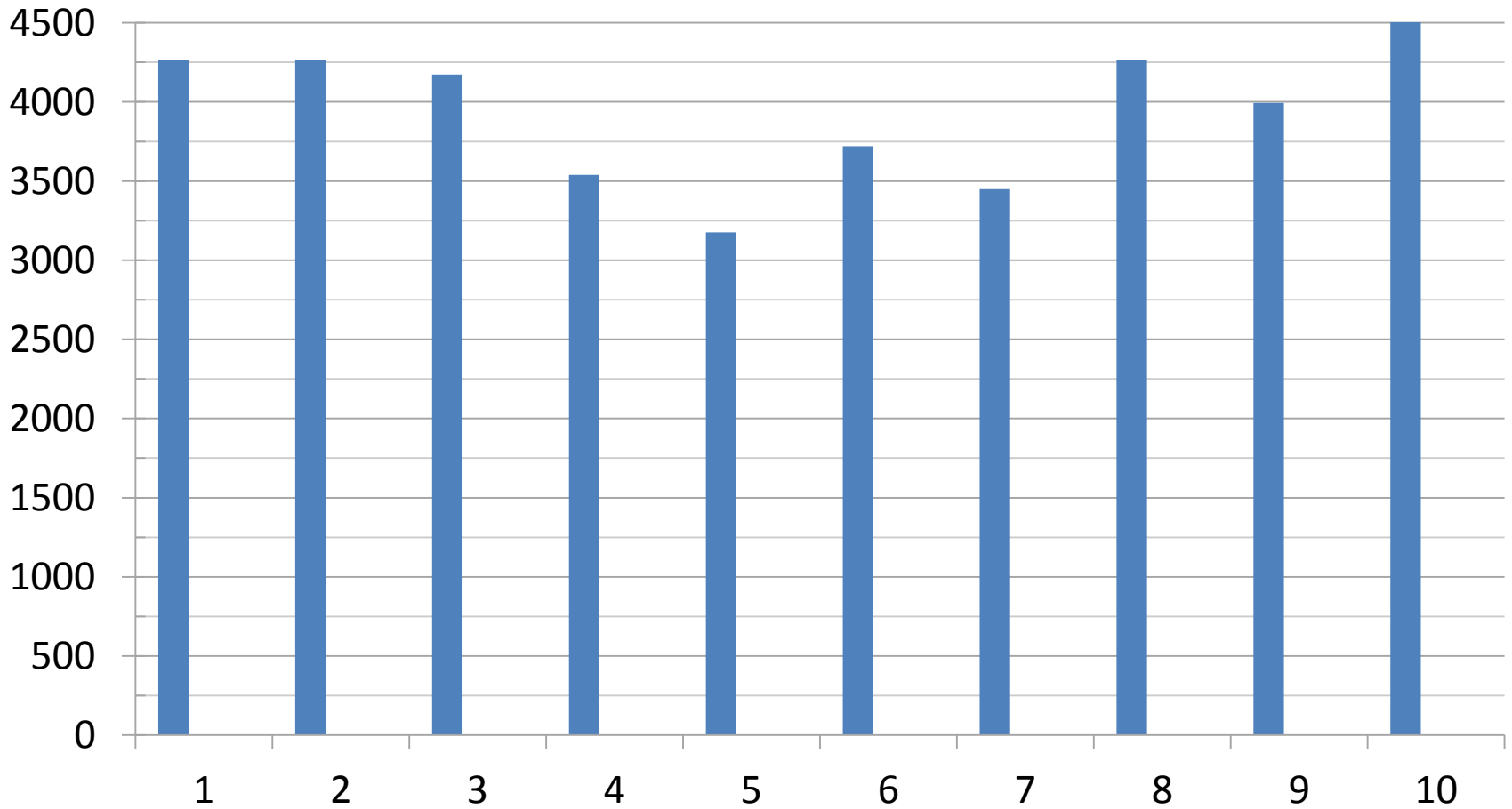
# Plant Stand – no./A

## Allegheny County, NC



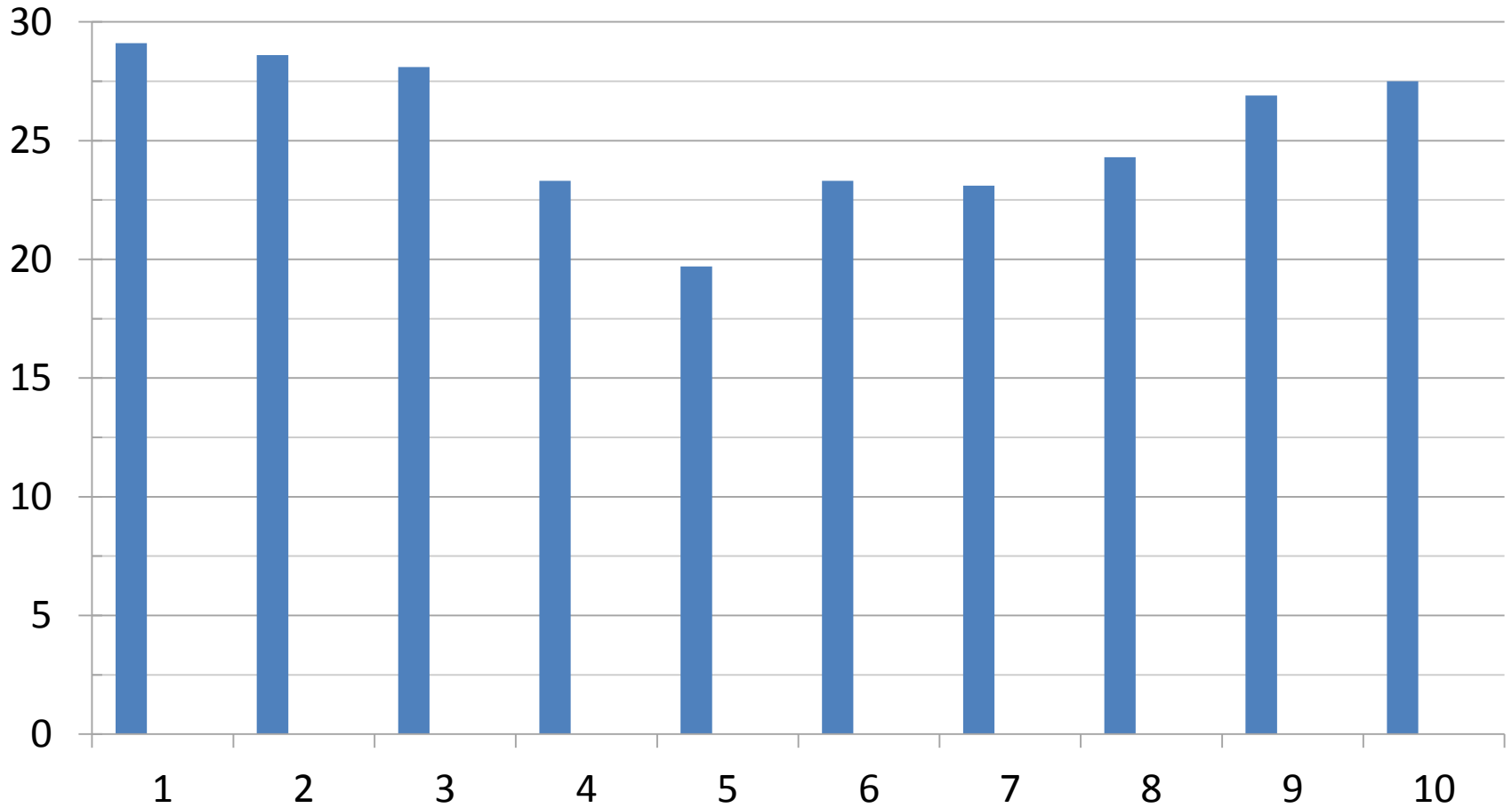
# Yield – no./A

## Allegheny County, NC



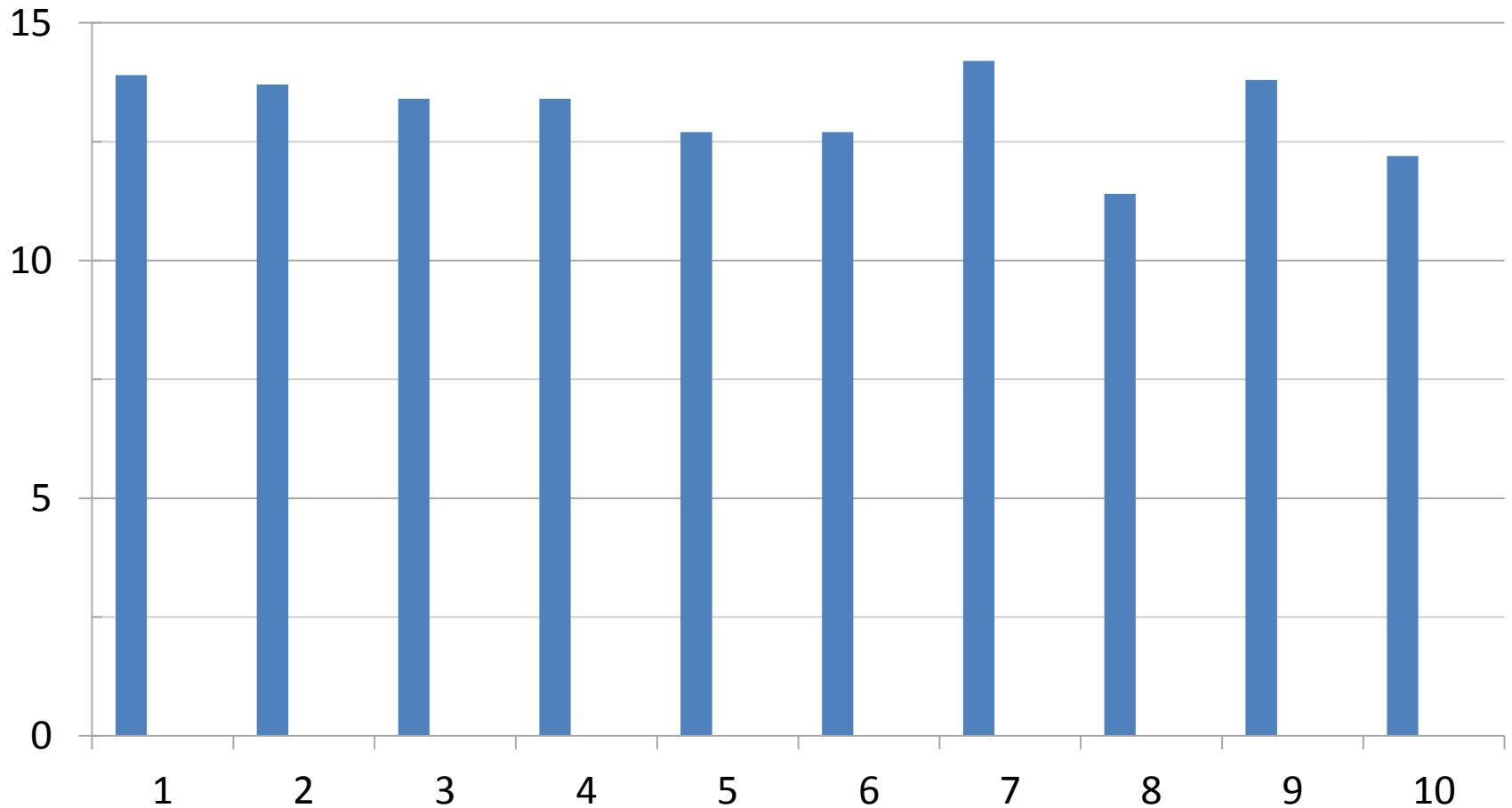
# Yield – tons/A

## Allegheny County, NC

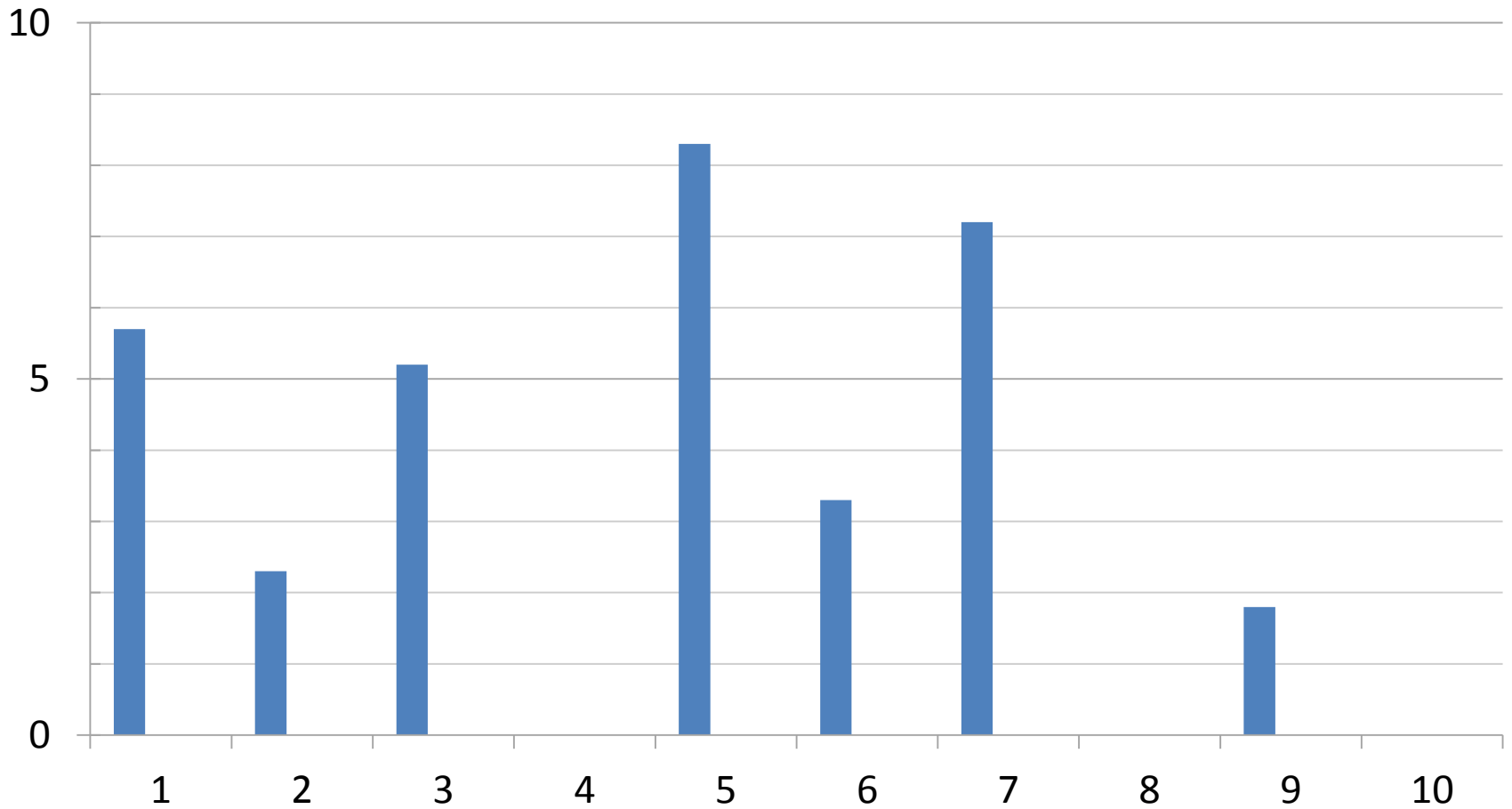


# Average Fruit Weight – lb/fruit

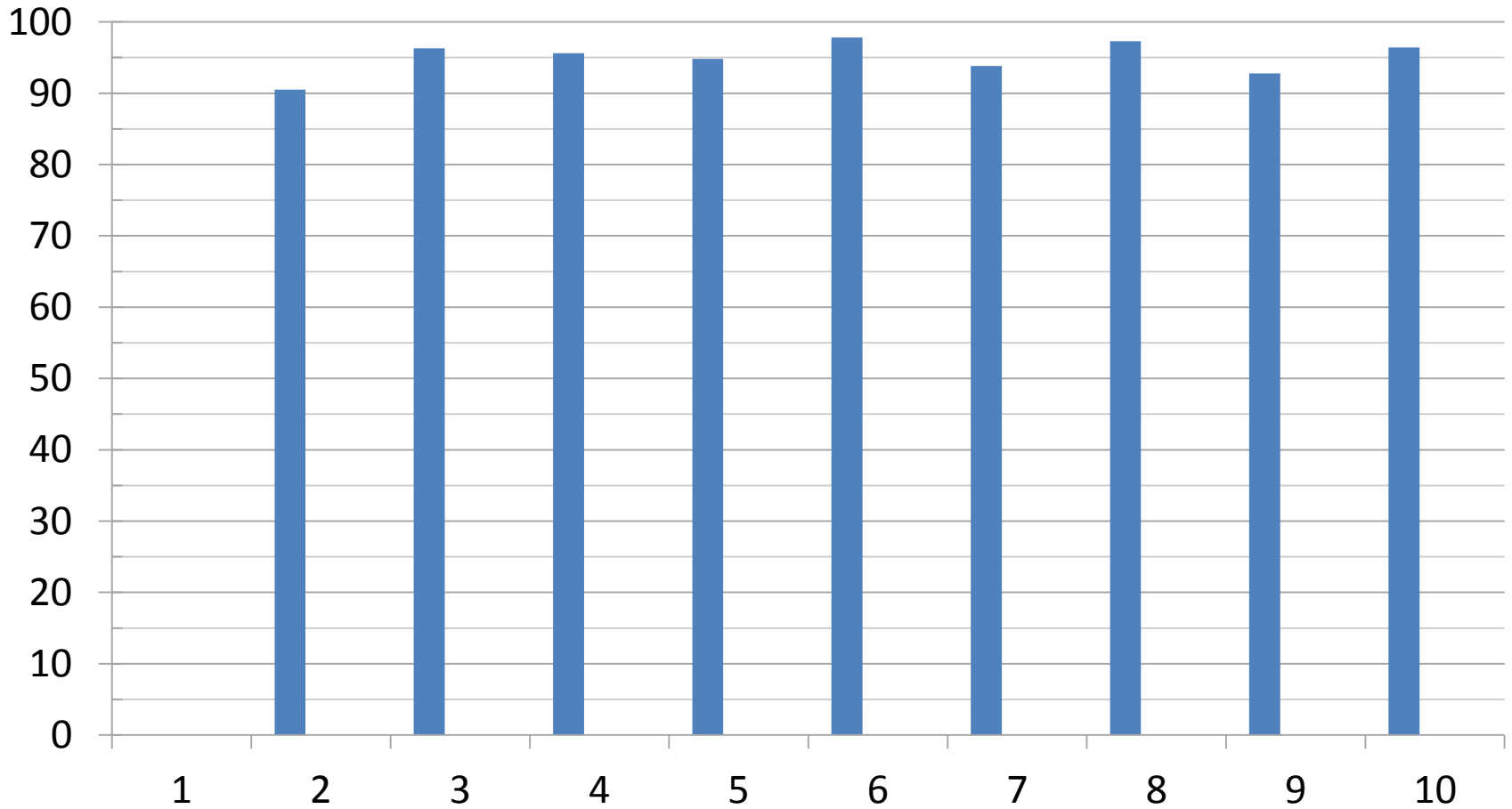
## Allegheny County, NC



# Immature Fruit – % Allegheny County, NC



# Overall Weed Control – % Allegheny County, NC

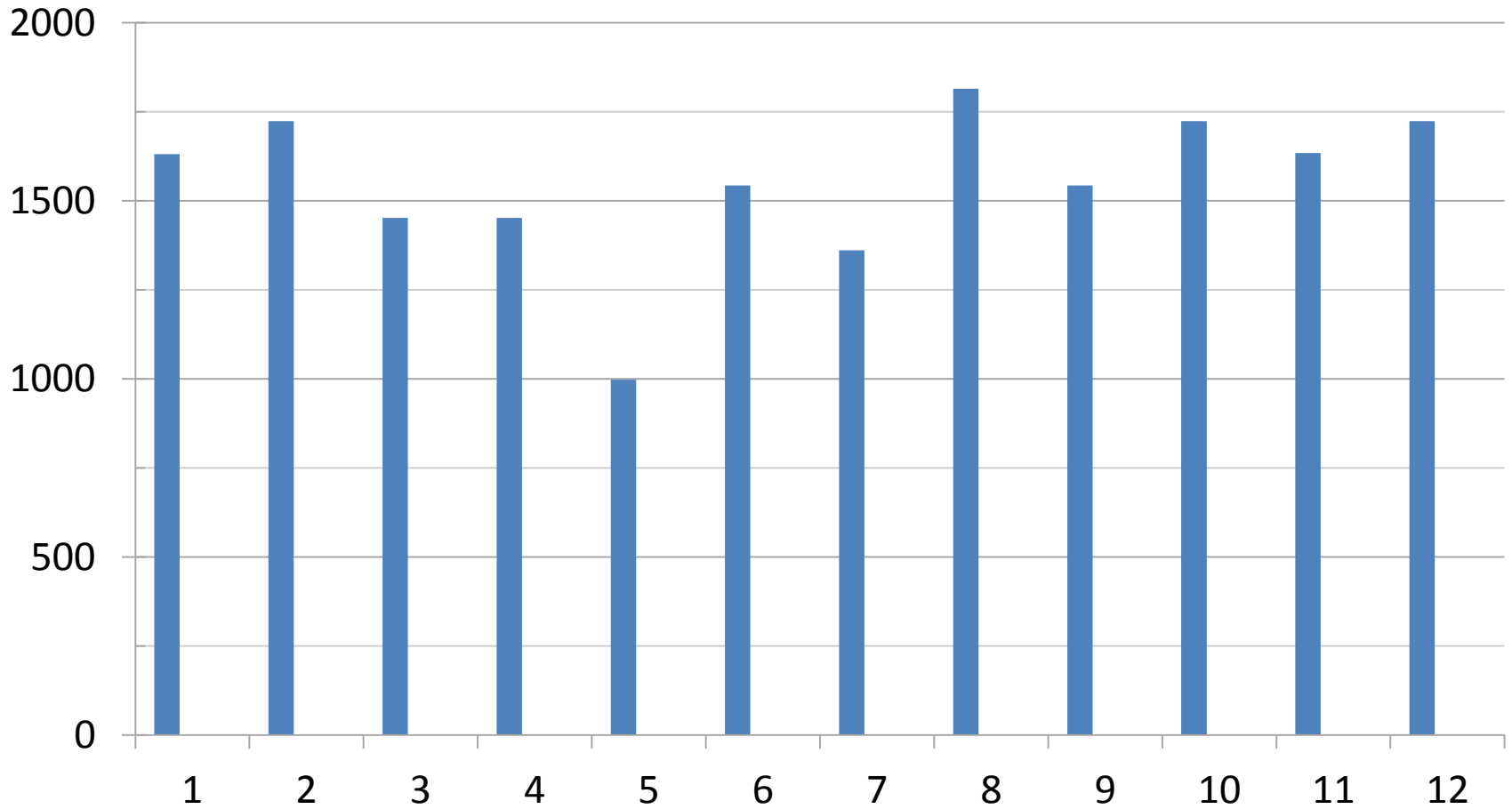


# Additional Treatments in Chowan County

11. Alachlor @ 2 pints/A plus Command 3ME  
@ 1 pint/A
12. Alachlor @ 4 pints/A plus Command 3ME  
@ 21 fl oz/A

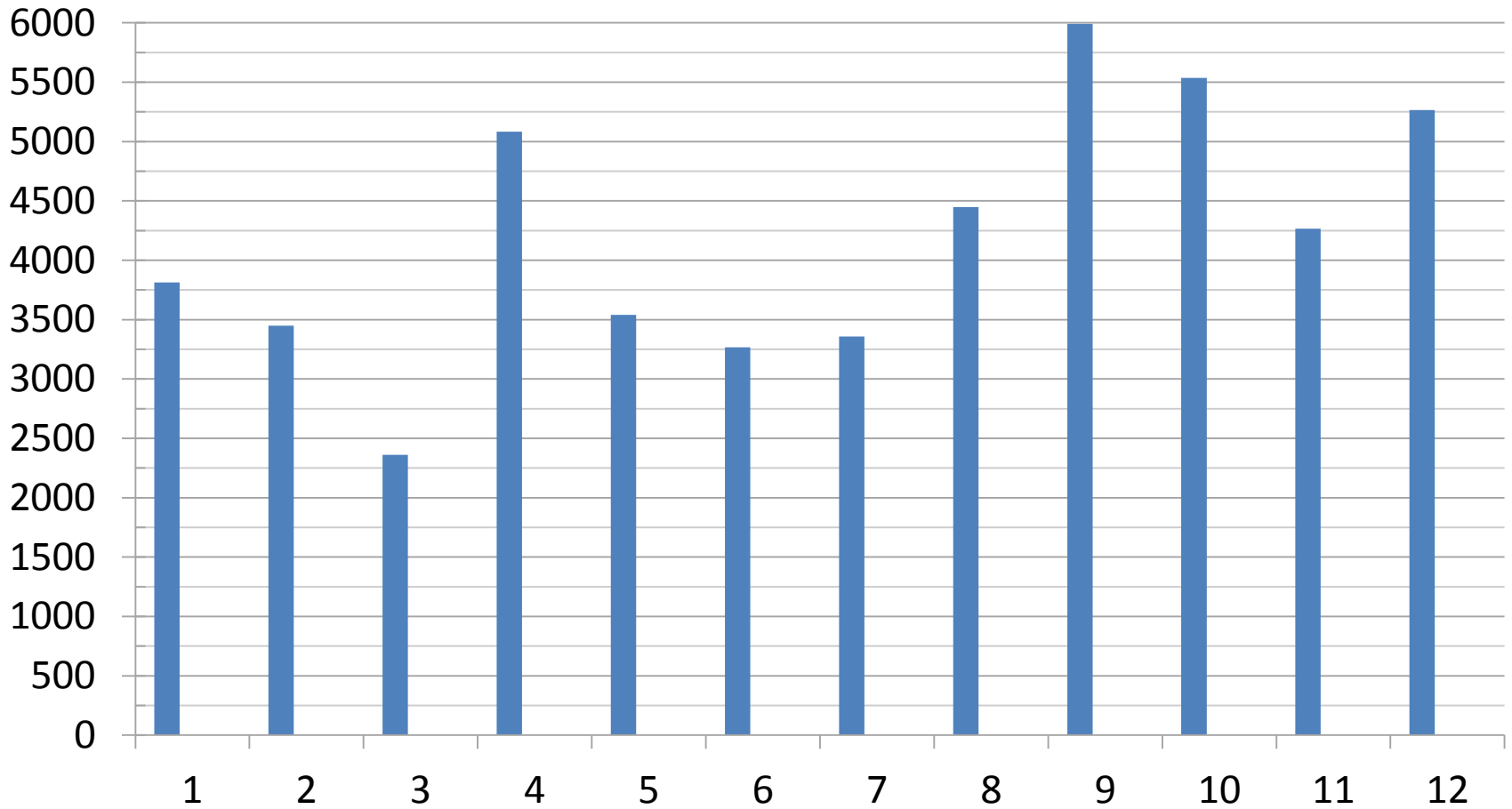


# Plant Stand – no./A Chowan County, NC



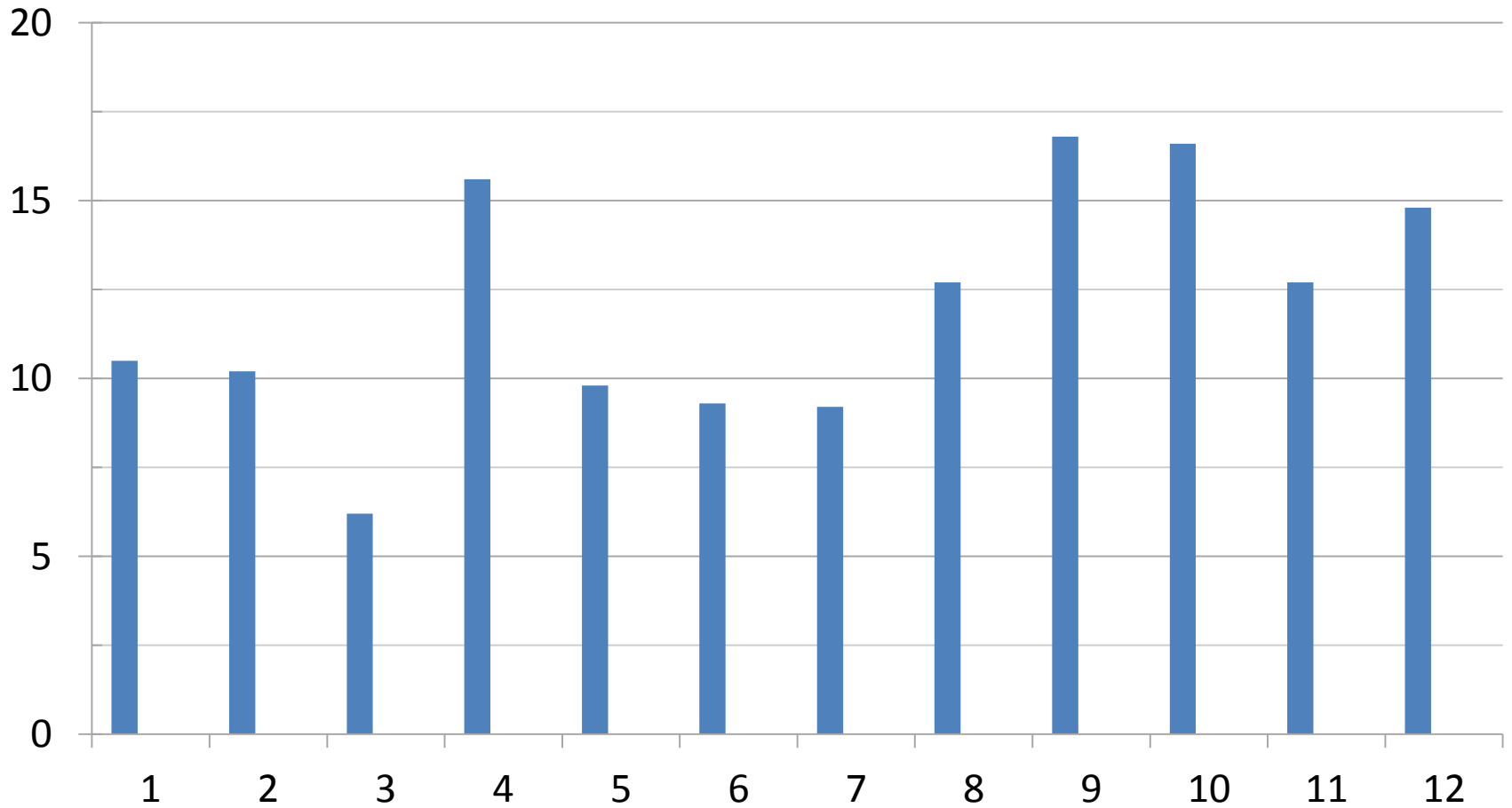
# Yield – no./A

## Chowan County, NC



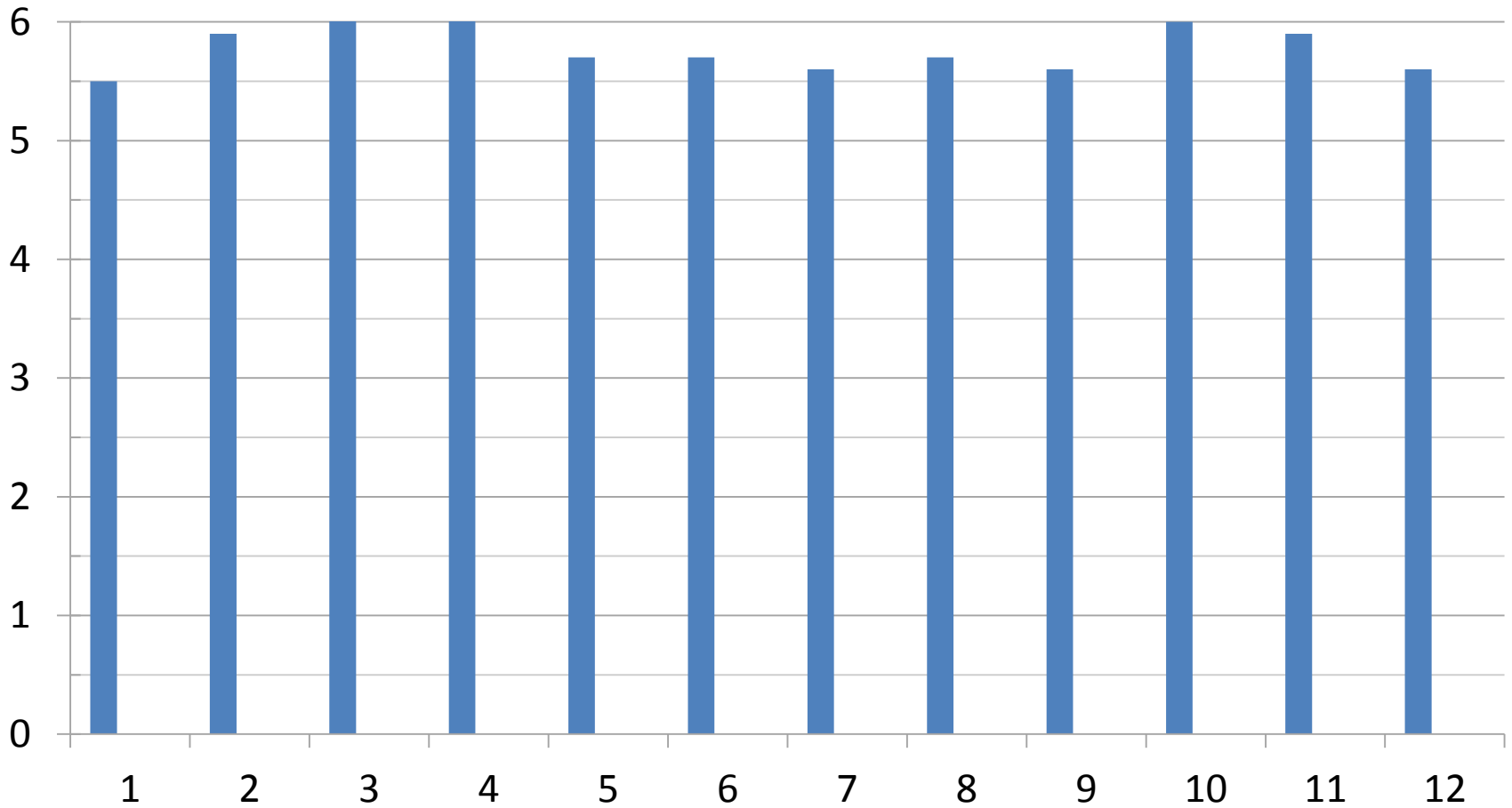
# Yield – tons/A

## Chowan County, NC

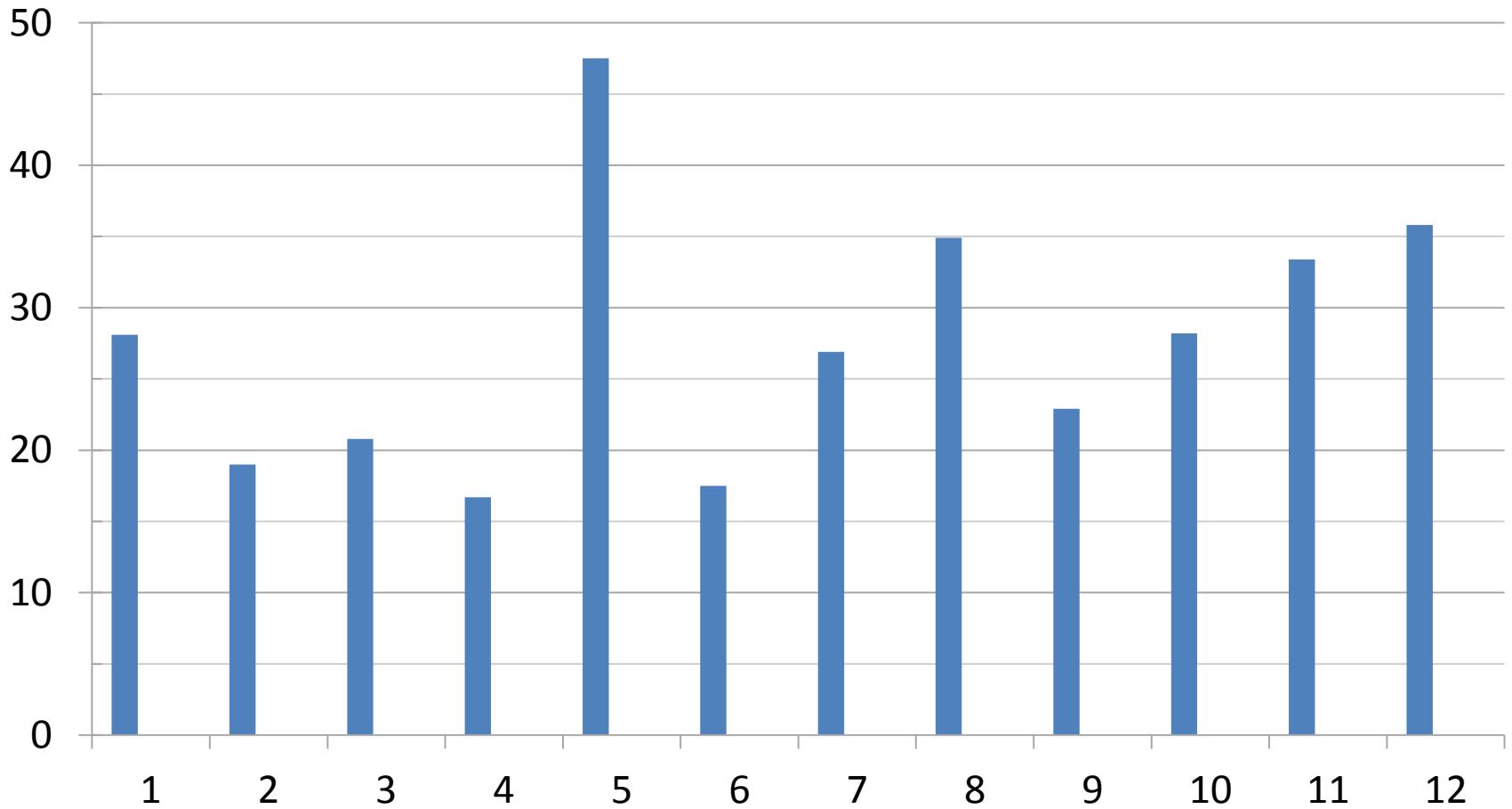


# Average Fruit Weight – lb/fruit

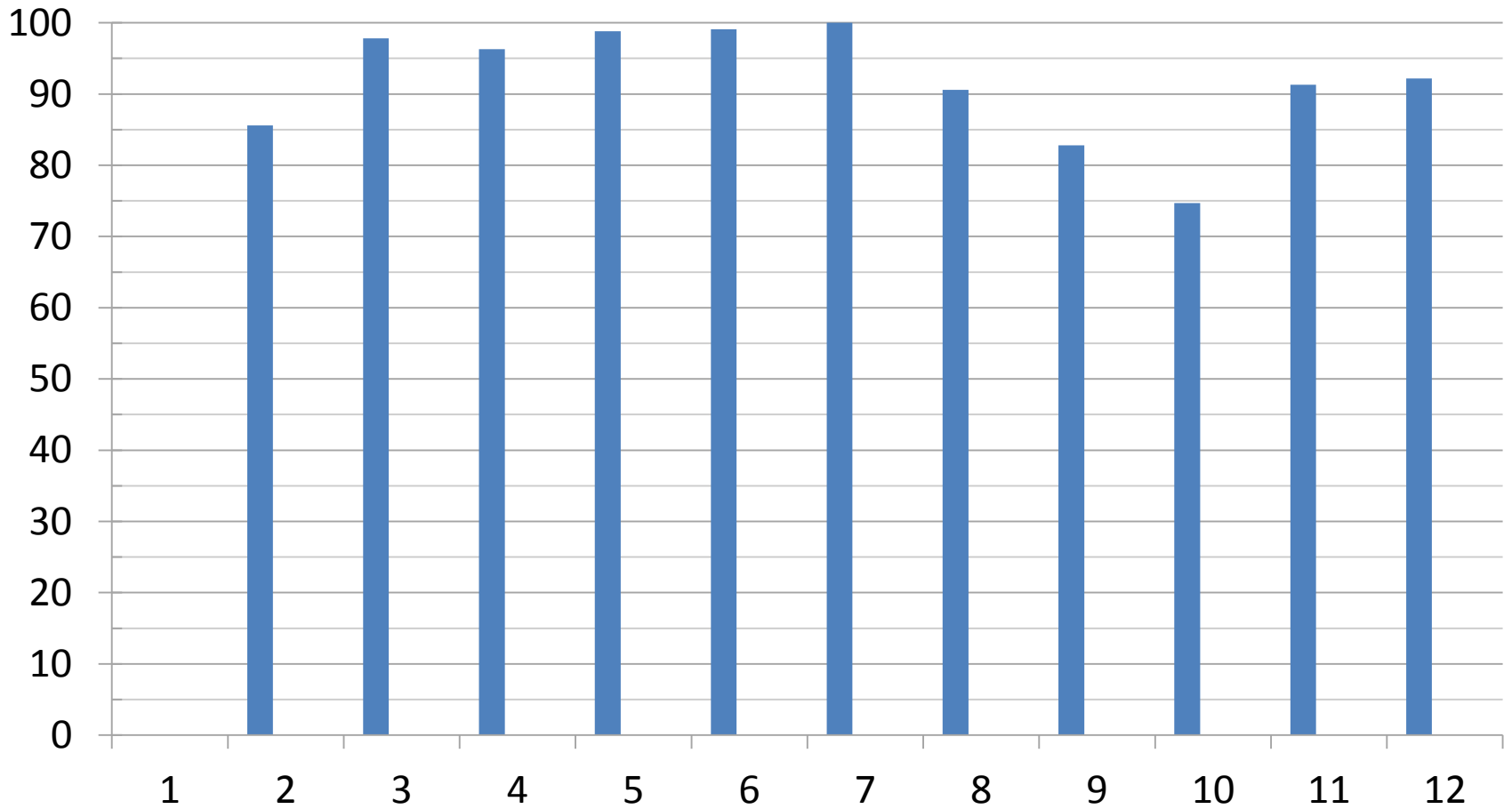
## Chowan County, NC



# Immature Fruit – % Chowan County, NC



# Overall Weed Control – % Chowan County, NC



# Locations in 2013

- Montgomery County
  - NT
  - Variety
    - ‘Apollo’
  - Did not get yield
    - Already windrowed part of the plot area.
  - No stand differences among treatments
  - Essentially 100% weed control from all treatments
  - Some late season ground cherry.
- Chowan County, NC
  - NT
  - Variety
    - Rep 1
      - ‘Apollo’
    - Rep 2
      - ‘Cronus’
    - Rep 3
      - ‘Field Trip’
    - Rep 4
      - ‘Magic Wand’

# Herbicide Treatments, 2013

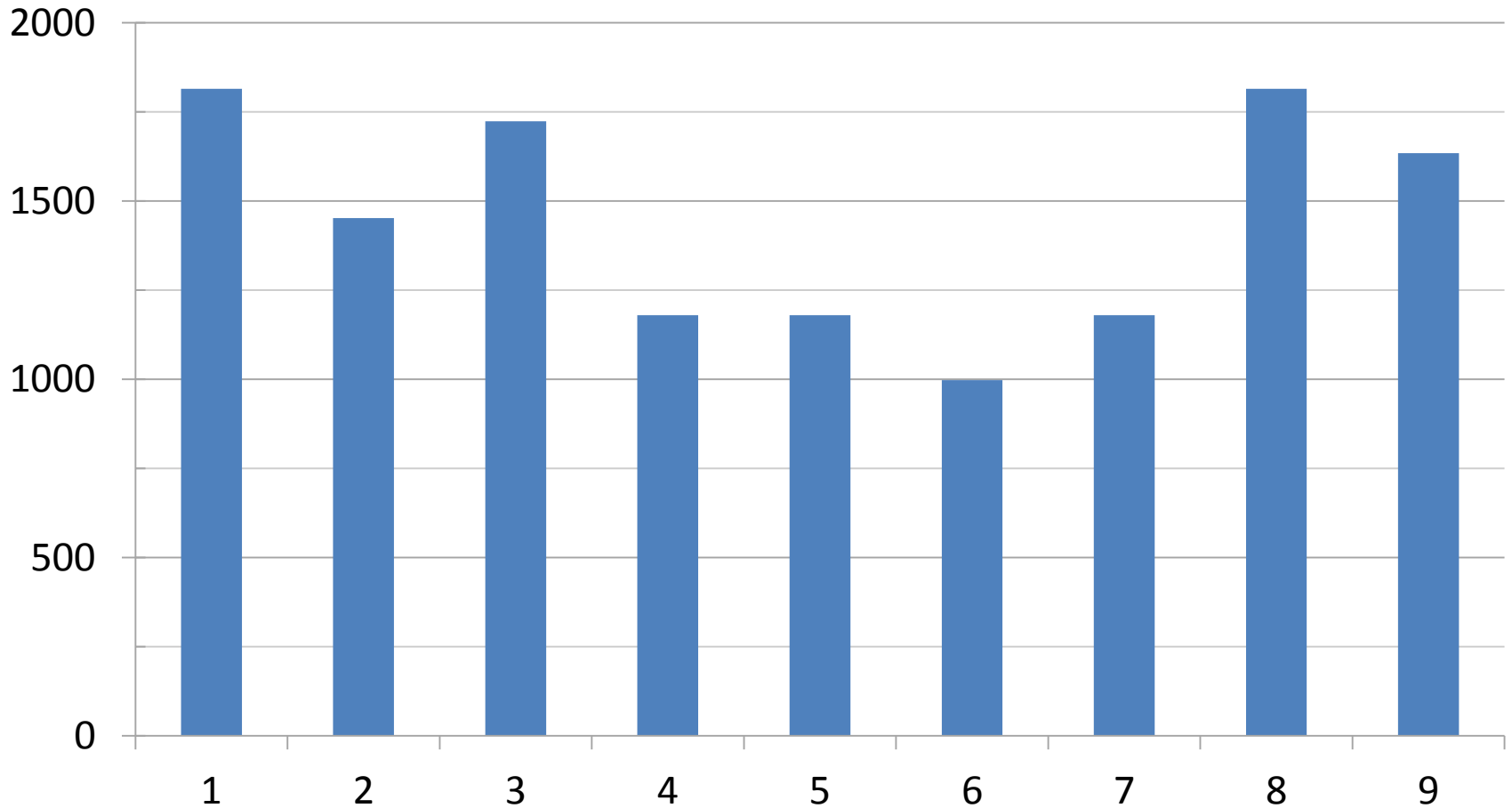
1. UTC
2. Dual Magnum @ 1.5 pints/A
3. Dual Magnum @ 1.5 pints/A plus Reflex @ 1.5 pints/A
4. Dual Magnum @ 1.5 pints/A plus Reflex @ 2 pints/A
5. Dual Magnum @ 1.5 pints/A plus Reflex @ 3 pints/A



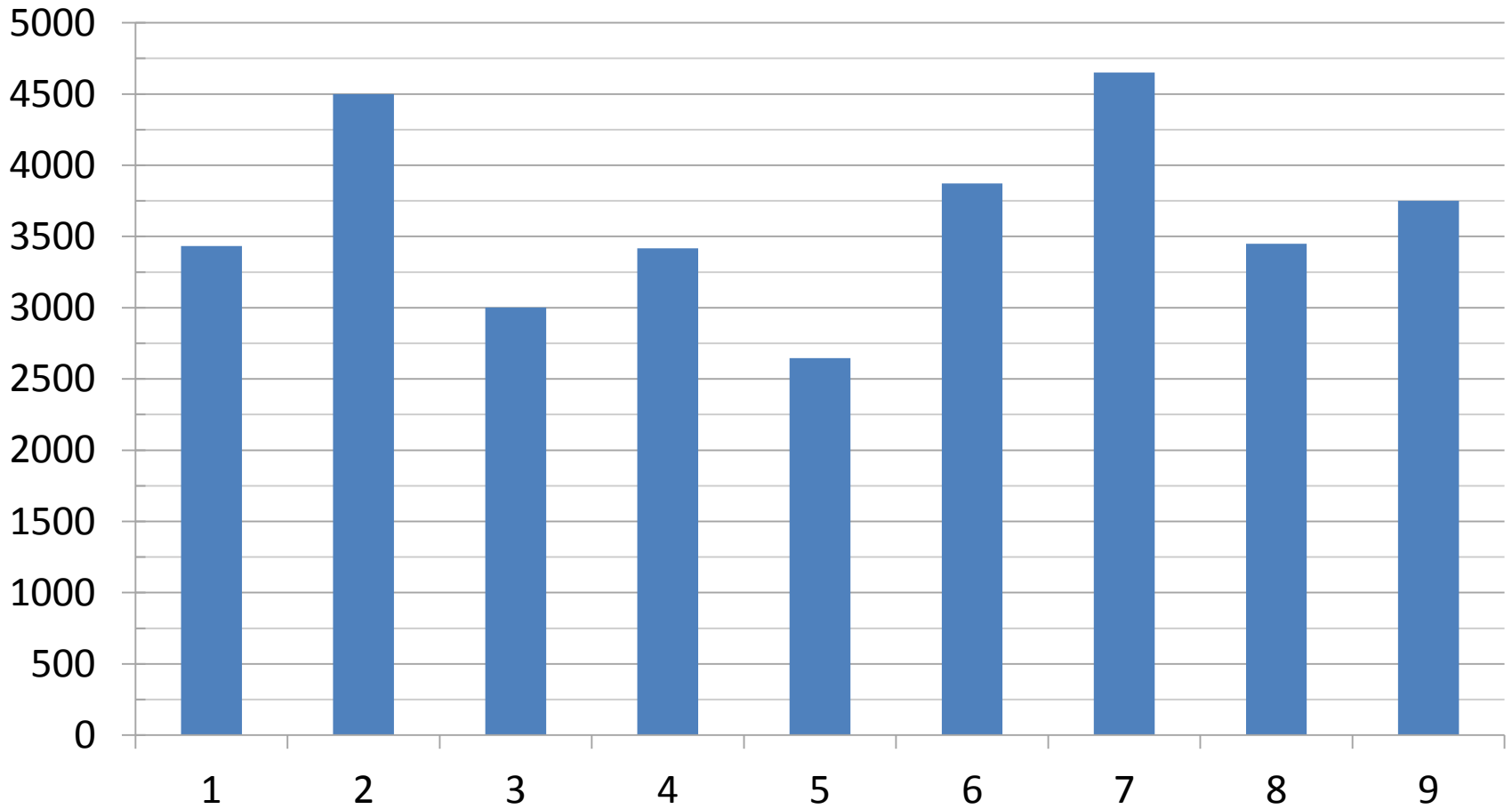
# Herbicide Treatments, 2012

6. Dual Magnum @ 1 pints/A plus Command 3ME @ 1 pint/A plus Reflex @ 1.5 pints/A
7. Dual Magnum @ 1 pints/A plus Command 3ME @ 1 pint/A plus Reflex @ 2 pints/A
8. Dual Magnum @ 1 pints/A plus Command 3ME @ 1 pint/A plus Sandea @ 2/3 oz/A
9. Command 3ME @ 21 fl oz/A plus Curbit @ 4 pints/A

# Plant Stand – no./A Chowan County, NC

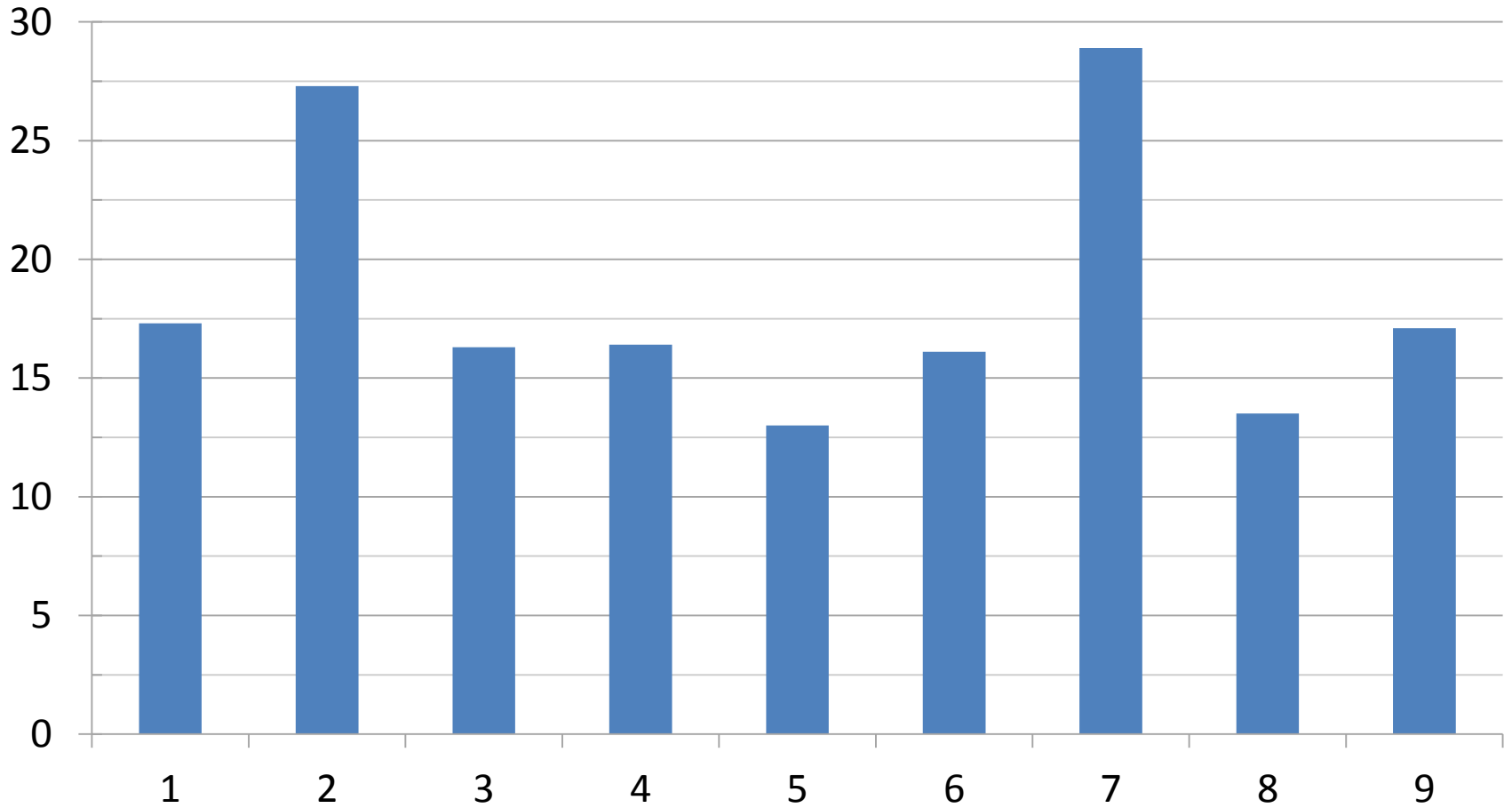


# Yield – no./A Chowan County, NC



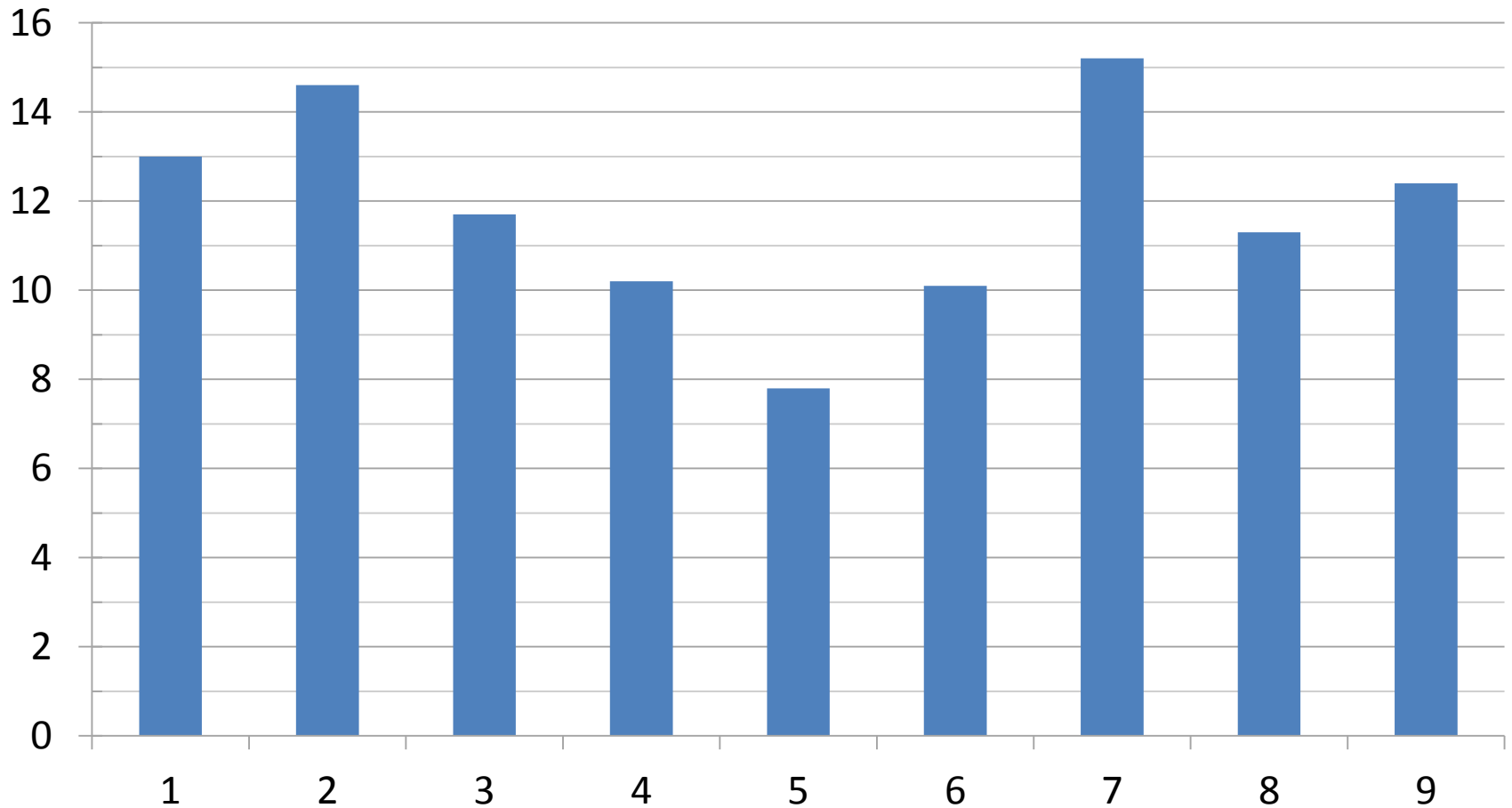
# Yield – tons/A

## Chowan County, NC

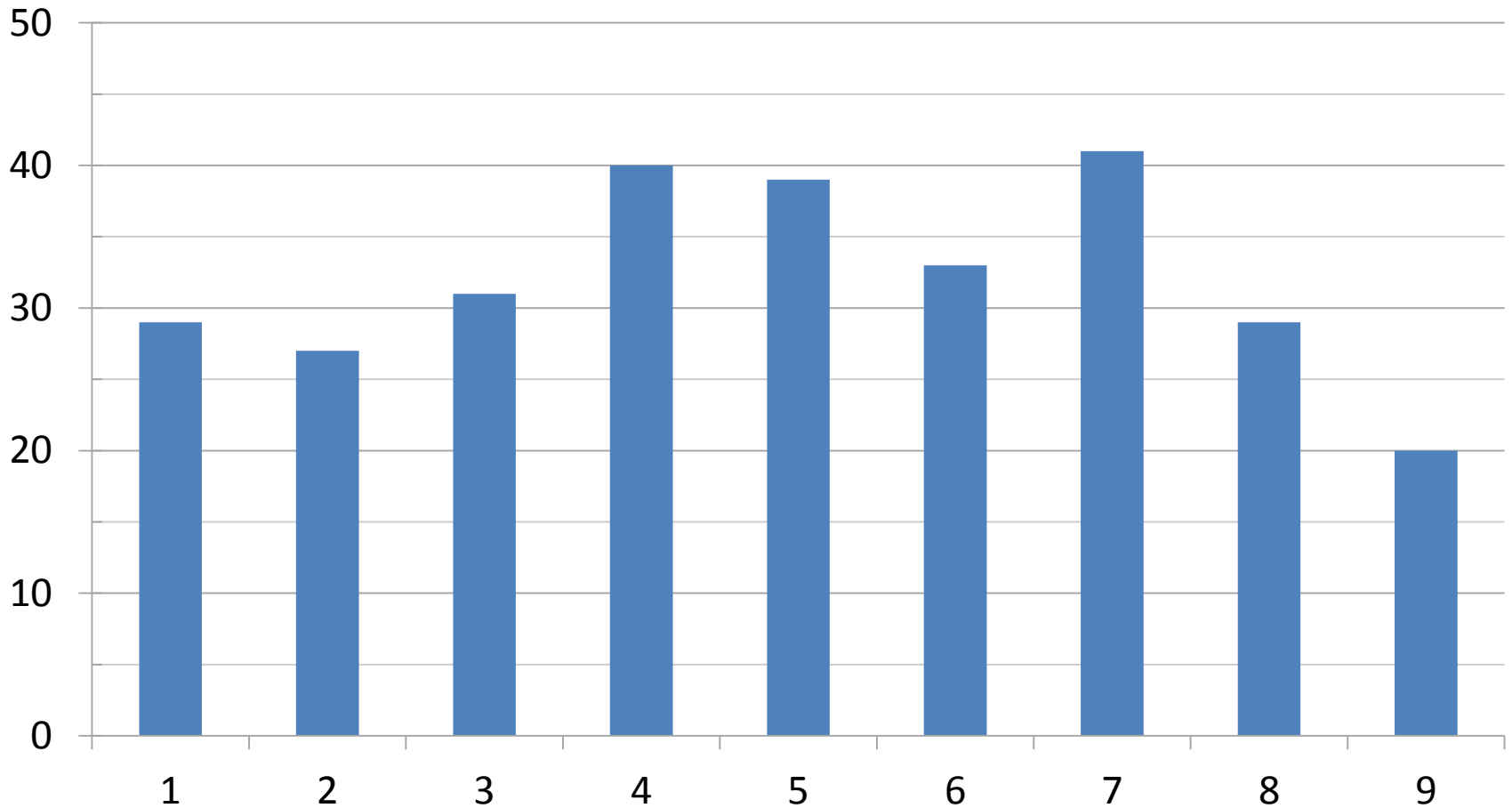


# Average Fruit Weight – lb/fruit

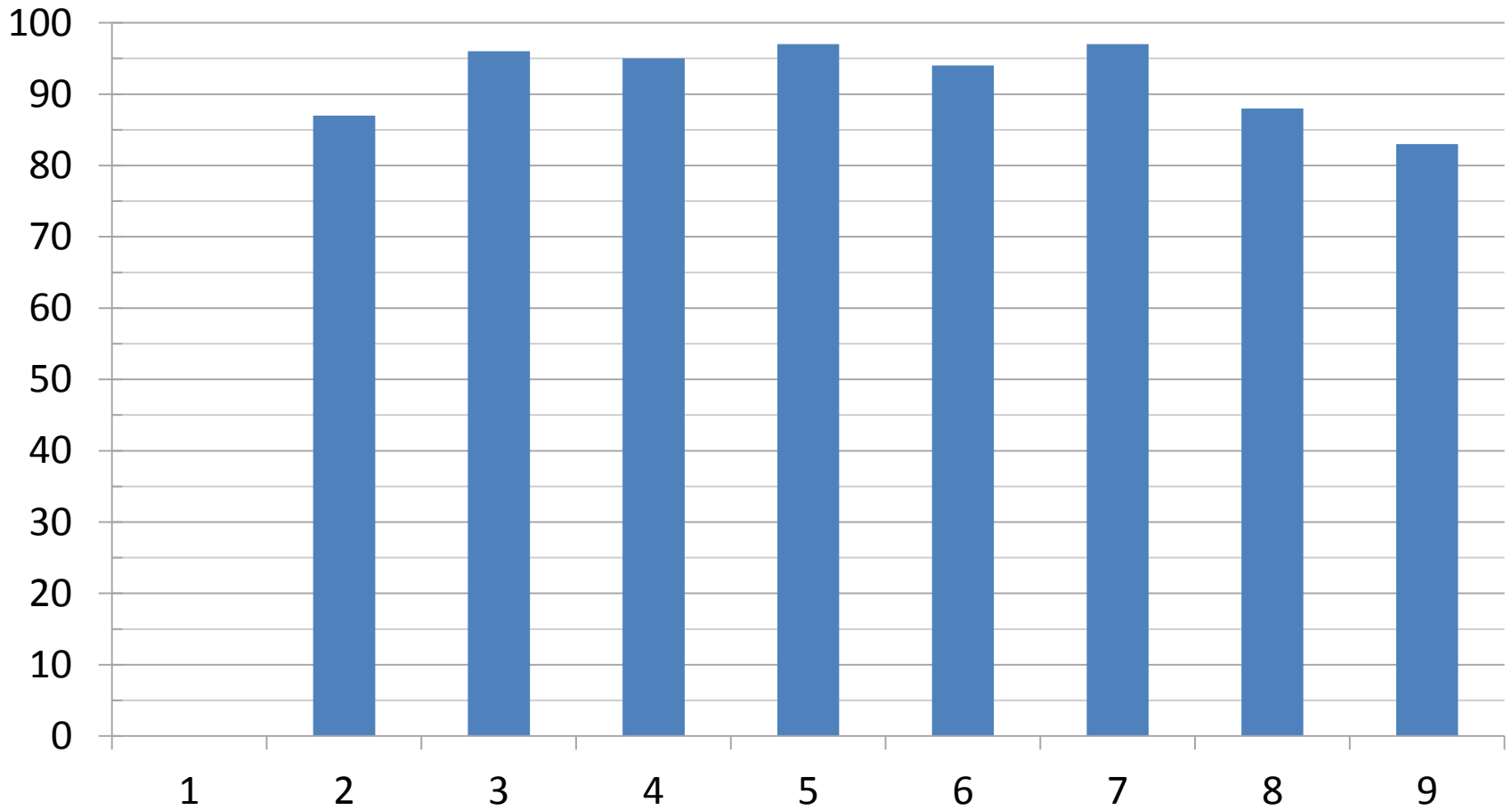
## Chowan County, NC



# Immature Fruit – % Chowan County, NC



# Overall Weed Control – % Chowan County, NC



# Conclusions

- Reflex @ 1.5 and 2 pints/A appears to be relatively safe.
- Reflex @ 3 pints/A appears to cause some yield reduction.
- The three way combinations provided excellent weed control.
- Alachlor appears to be relatively safe and gave very good weed control.



# Reflex

- Received Federal Tolerance this past year.
  - Should be labeled for this use season.
  - Not sure on rate
  - Not sure on how this label will be managed
  - May be an indemnified label

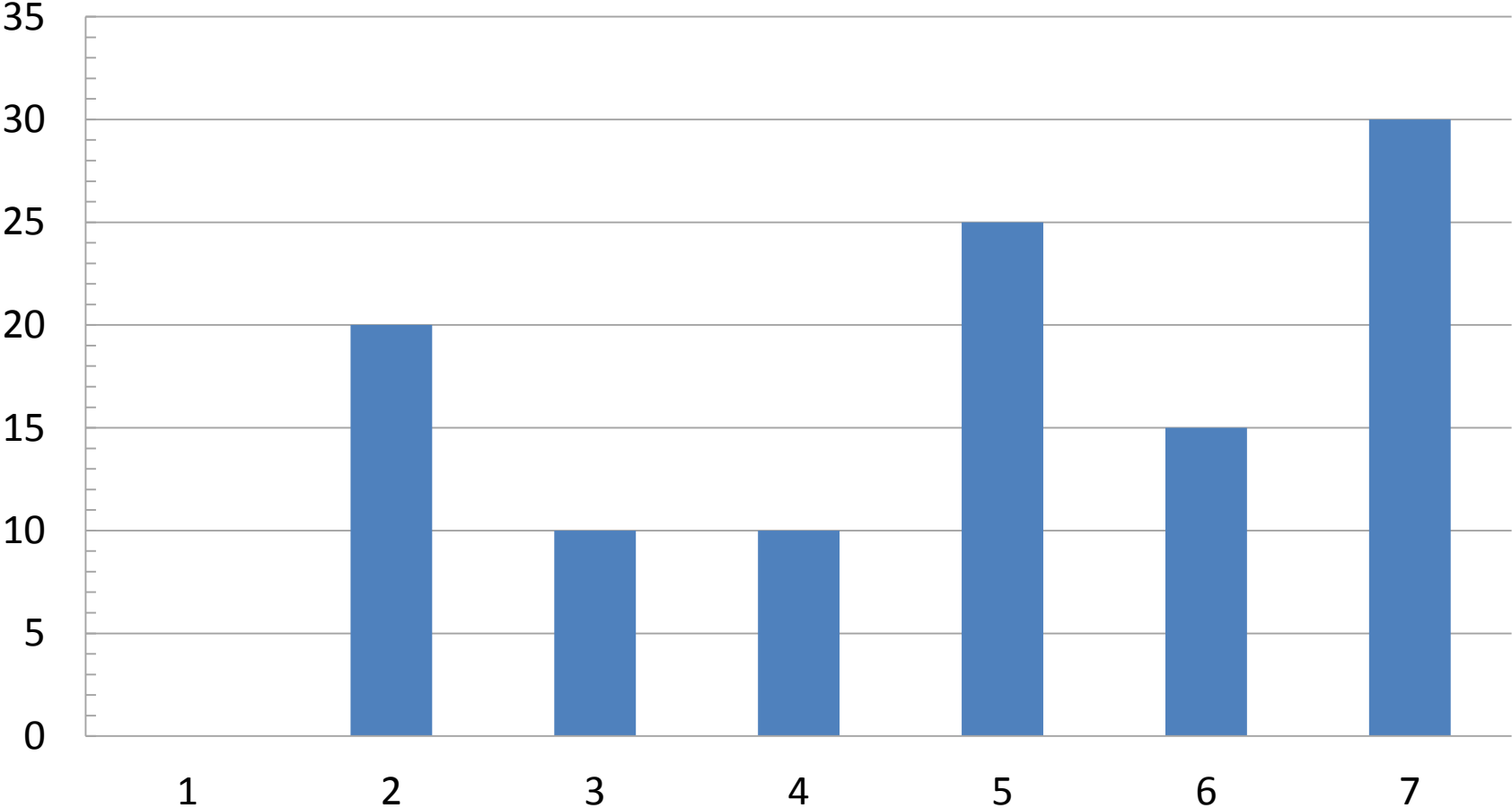
# Postemergence Trial, 2013

- Even with our best herbicide treatments we are always going to have some escapes.
- Postemergence Products
  - Sandea
  - Poast
  - Select Max
  - Generics
- Over the past couple of years we have toyed with the idea of Basagran.
- Grower friend in MS that had tried it a couple of years ago with good success.
- So we tried in 2013.

# Basagran Trial, 2013

1. UTC
2. Basagran @ 1 pint/A plus NIS @  $\frac{1}{4}\%$  v/v
3. Basagran @ 1.5 pints/A plus NIS @  $\frac{1}{4}\%$  v/v
4. Basagran @ 2 pints/A plus NIS @  $\frac{1}{4}\%$  v/v
5. Basagran @ 1 pint/A plus COC @ 1% v/v
6. Basagran @ 1.5 pints/A plus COC @ 1% v/v
7. Basagran @ 2 pints/A plus COC @ 1% v/v

# Basagran % Injury Results, 2013



Injury ratings taken 7 days after treatment

# Basagran Results, 2013

- Crop oil concentrate caused more injury than non-ionic surfactant.
- By 21 days, almost no injury was observed.
- No differences in yields among treatments.
- Appears to be fine on Jack-O-Lanterns.
- Do not use on C. Maxima – Prize Winner
- **Remember Basagran is not labeled for Pumpkins.**

# Questions?

- R. Allen Straw

Mobile: 931.261.0973

e-mail: [astraw@vt.edu](mailto:astraw@vt.edu)